

DEXTER YARD

AMENITY BROCHURE

A COMMUNITY  
THAT INSPIRES  
INNOVATION

ENVIRONMENTS THAT  
FOSTER COLLABORATION

700 DEXTER SEATTLE, WA



## A PLACE THAT LOOKS AFTER YOU AND YOUR PEOPLE

- Open block campus
- 15 floors of tenant opportunity
- Flexible floorplates
- Collaborative work environments
- Top tech-talent neighborhood
- On-site retail
- Unique rooftop views of Seattle and South Lake Union

# ENVIRONMENTS THAT FOSTER COLLABORATION

Dexter Yard offers 26,600 square feet of amenities that foster an environment of social connectedness and interaction among neighbors and the community.

Focused on lifestyle necessities, food and drink, services, and friendly competitive recreation, the ground plane at Dexter Yard will soon become a casual approachable atmosphere morning to night, weekday to weekend.

[VIEW PHOTOS](#)



LEVEL 2

LEVEL 1

## THE BEER HALL

A reliable source of fun, day or night. The Beer Hall is a lively multi-use venue that serves elevated bar foods and artisan pizza. Always a warm and inviting atmosphere with views that overlook the fieldhouse.

[VIEW PHOTOS](#)

## THE FIELDHOUSE

The Fieldhouse, a 5,154 SF multi-use space located in the southwest corner of Dexter Yard is truly one-of-a-kind in Seattle. The configuration flexibility allows for endless options for sporting events, community gatherings and more, all on-site.

[VIEW PHOTOS](#)



## THE SPEAKEASY

An intimate exclusive lounge tucked away in a location accessible by tenants only. Designed to engage the senses, everything is curated with obsessive detail.

[VIEW PHOTOS](#)

## THE REC ROOM

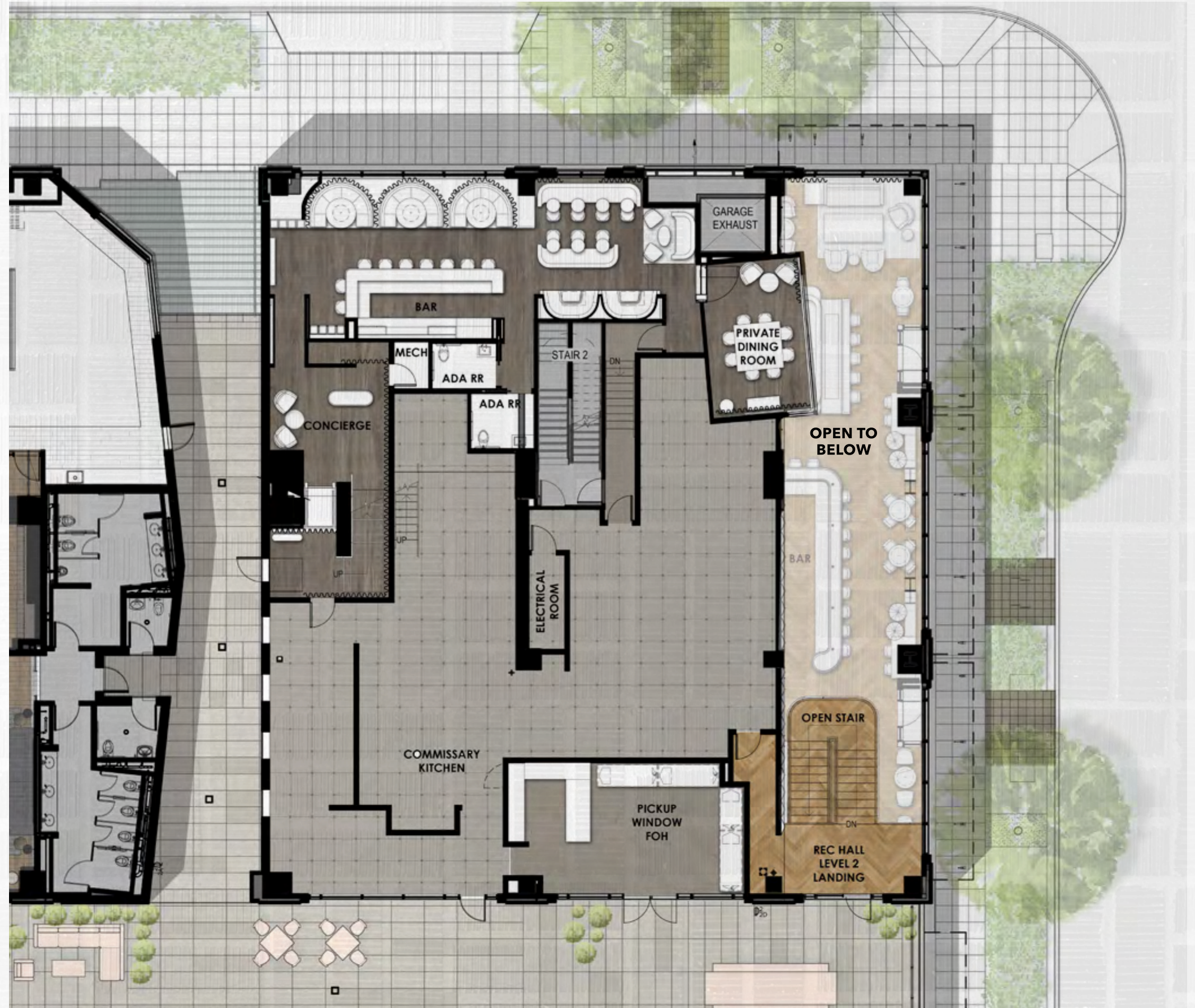
A sun-drenched multi-purpose venue where you can eat, play and sip craft cocktails. The ultimate place to meet up and unwind, the Rec Room houses a restaurant, bar, lounge, darts, bowling alley, card room and golf simulator.

[VIEW PHOTOS](#)

## GRAB & GO

A gourmet get-all urban bodega that includes fine wines, craft beer, fresh eats, gifts and every day essentials.

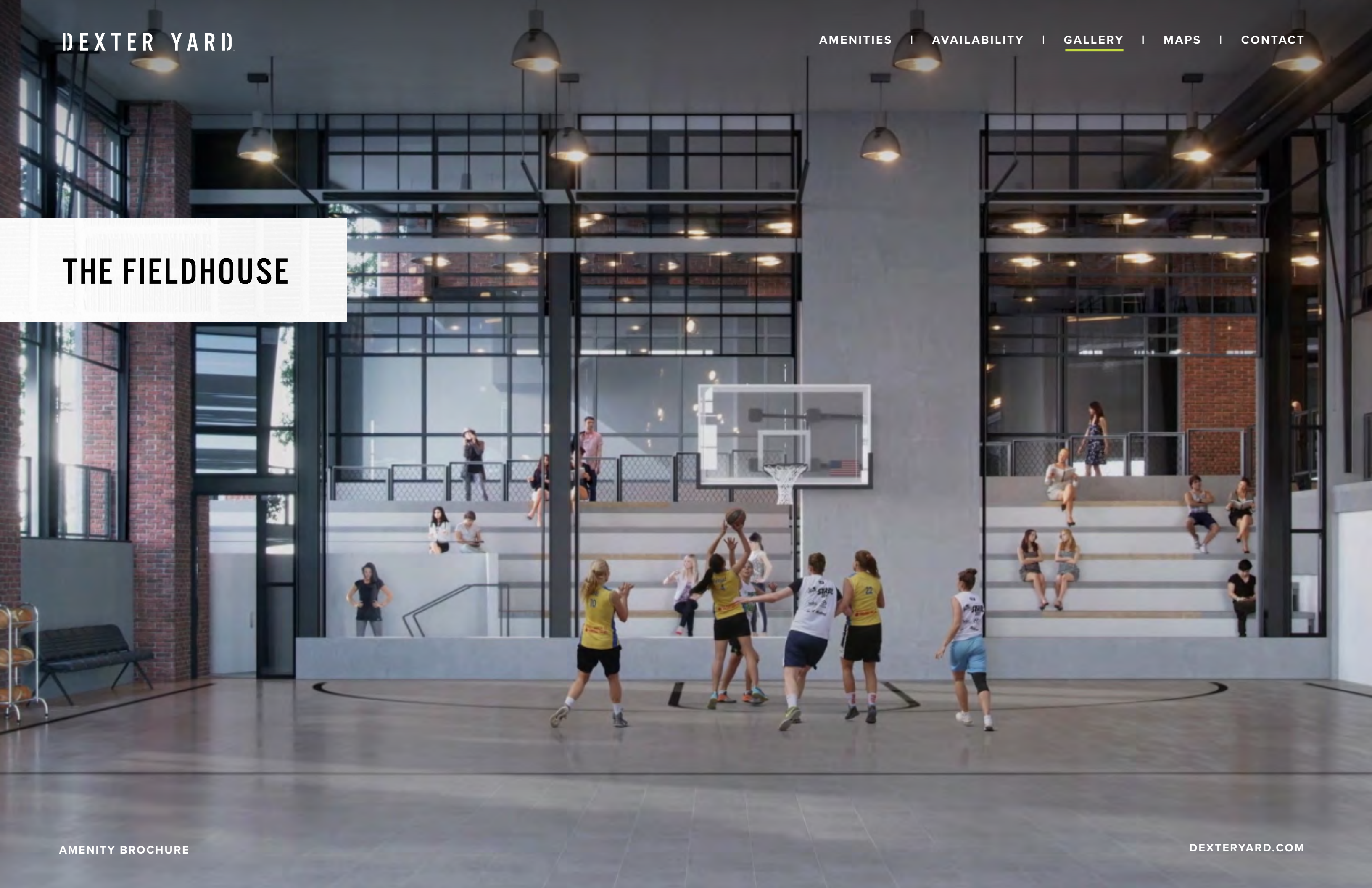
[VIEW PHOTOS](#)



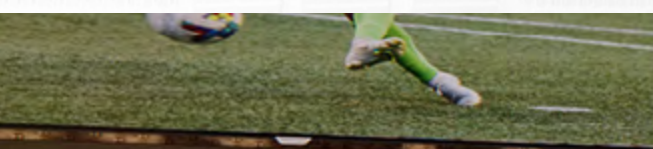
**VIEW FROM BEER  
HALL ONTO THE  
FIELDHOUSE**



# THE FIELDHOUSE



REC ROOM  
BAR + LOUNGE

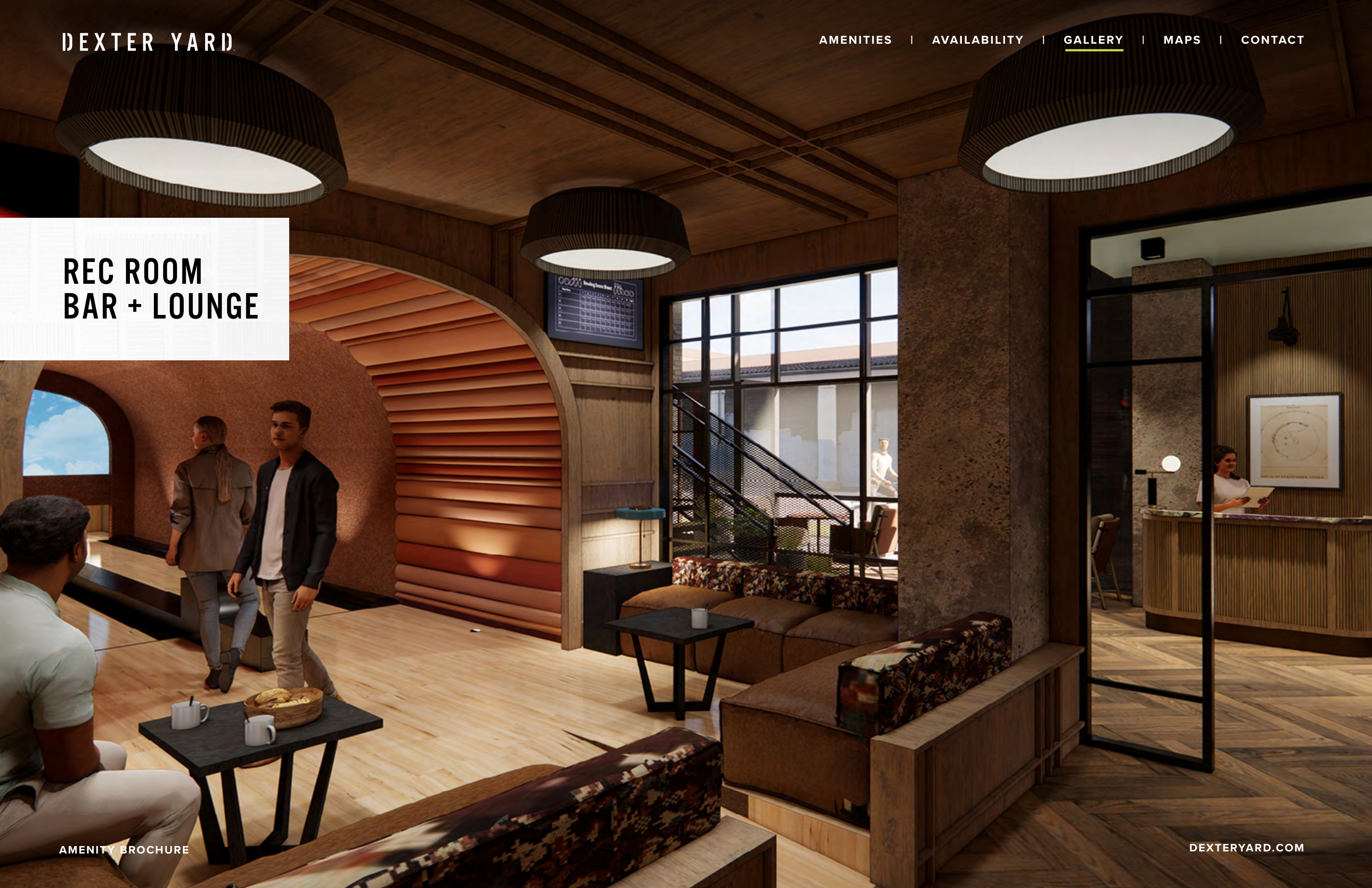




REC ROOM  
BAR + LOUNGE



REC ROOM  
BAR + LOUNGE



REC ROOM  
BAR + LOUNGE



SPEAKEASY

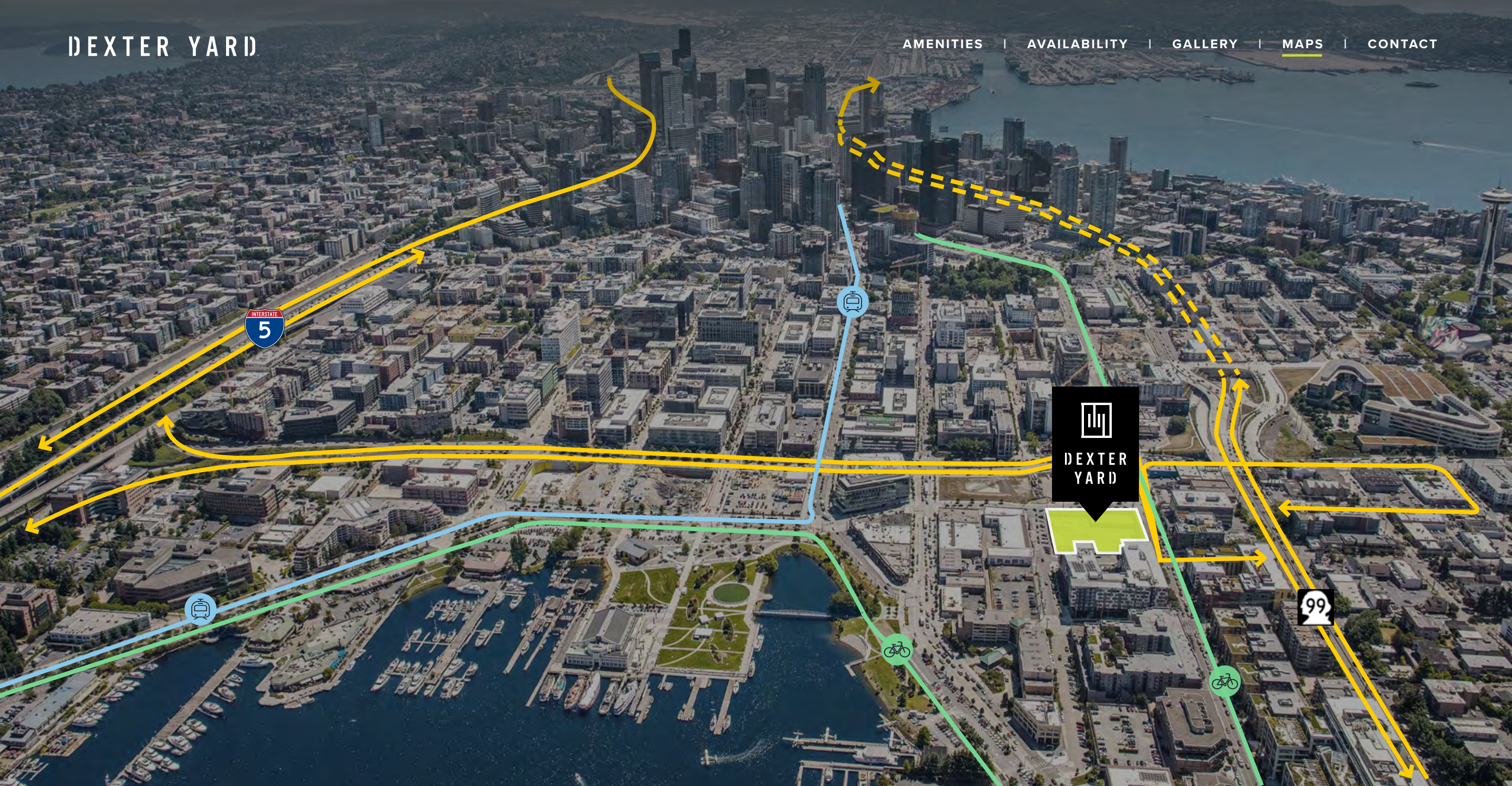


SPEAKEASY



GRAB & GO





## GETTING HERE

▶ [GET DIRECTIONS](#)

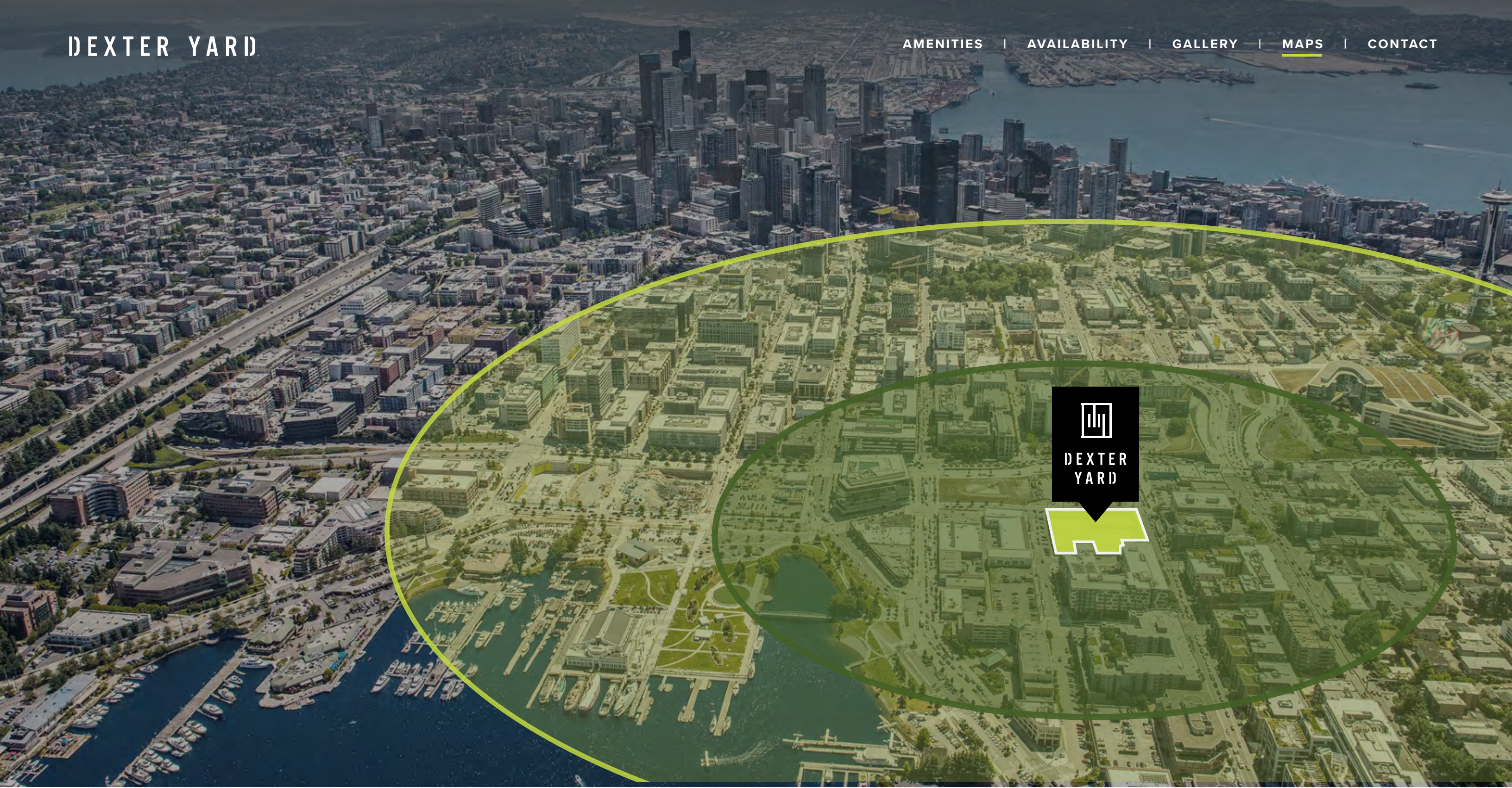
I-5 ON/OFF RAMP  
**.4 MILES**

HIGHWAY 99  
**1 BLOCK**

NEARBY BUS STOPS  
**5 STOPS**

SLU STREET CAR  
**.3 MILES**

LAKE UNION BIKE LOOP  
**.25 MILES**



# NEIGHBORHOOD AMENITIES

WITHIN 1 MILE

AMENITY BROCHURE

RESTAURANTS

40+

[VIEW RESTAURANTS](#)

SERVICES

15+

[VIEW SERVICES](#)

LODGING

20+

[VIEW LODGING](#)

BIOMED REALTY PROPERTIES

7



## ABOUT BIOMED

Dexter Yard is the latest example of BioMed Realty's growing portfolio of extraordinary development projects. BioMed Realty, a Blackstone portfolio company, is a leading provider of real estate solutions to the life science and technology industries.

**100%**

of our portfolio concentrated in the core life science markets of Boston/Cambridge, San Francisco, San Diego, Seattle, Boulder and Cambridge, U.K.

**3.4MM SF**

in active construction to meet the growing demand of the life science industry

**16.4MM SF**

owned and operated in leading innovation markets

**26MM SF**

available to accommodate tenants as they grow

**295+**

in-house experts and life science real estate professionals

**275+**

tenant partners in leading innovation markets



OMEROS BUILDING



307 WESTLAKE



INNOVATION CENTER



Innov8

## LEASING



**JOE GOWAN**

Senior Managing Director  
206 607 1738  
Joe.Gowan@jll.com

**BAILEY AGGEN**

Senior Associate  
206 915 1040  
bailey.aggen@jll.com

A  BioMed Realty property

## WE'RE SOCIAL

